

Committee on Development Information Science and Technology
(CODIST)

Mapping Task force Committee: Developing a health facility GIS database in Tanzania

Benjamin K. Mayala

National Institute for Medical Research (NIMR),
Tanzania

27 April, 2009

Outline

- Introduction
- Existing situation
- Problem
- Objective
- Method
- Goals Achieved
- Unique Code

Introduction

- ❑ There are various organizations carrying out health facilities mapping in Tanzania
- ❑ It is complex
 - ❑ Understanding the extent of health facilities mapped
 - ❑ Equipment and tools used
 - ❑ Skills
 - ❑ Accessing the available health facility coordinates

Existing Situation

- ❑ There are Multiple Health Facility data source
 - ❑ Difficult to obtain list at one source
 - ❑ No comprehensive facility list

- ❑ Each source has its own facility list

Problem

- ❑ No clear link
 - ❑ difficult to know who is doing what
 - ❑ duplication of facility mapping activities exists.

- ❑ No standard coding system

- ❑ Naming
 - ❑ Spelling Mistakes,
 - ❑ Sources can name the same facility differently

- ❑ HF_ Type not well specified
 - ❑ Dispensary
 - ❑ Health Centre
 - ❑ Hospital



NIMR

For example

NMCP	NIMR	MEDA	HMIS
Lumbe disp	Lumbe	Lumbe dispensary	Lumbe dis
Amana Hosp	Amana	Amana Hospit	Amana Hospital
Kaliua HC	Kaliua H/C	Kaliua Health Centre	Kaliua H/Centre

Objective

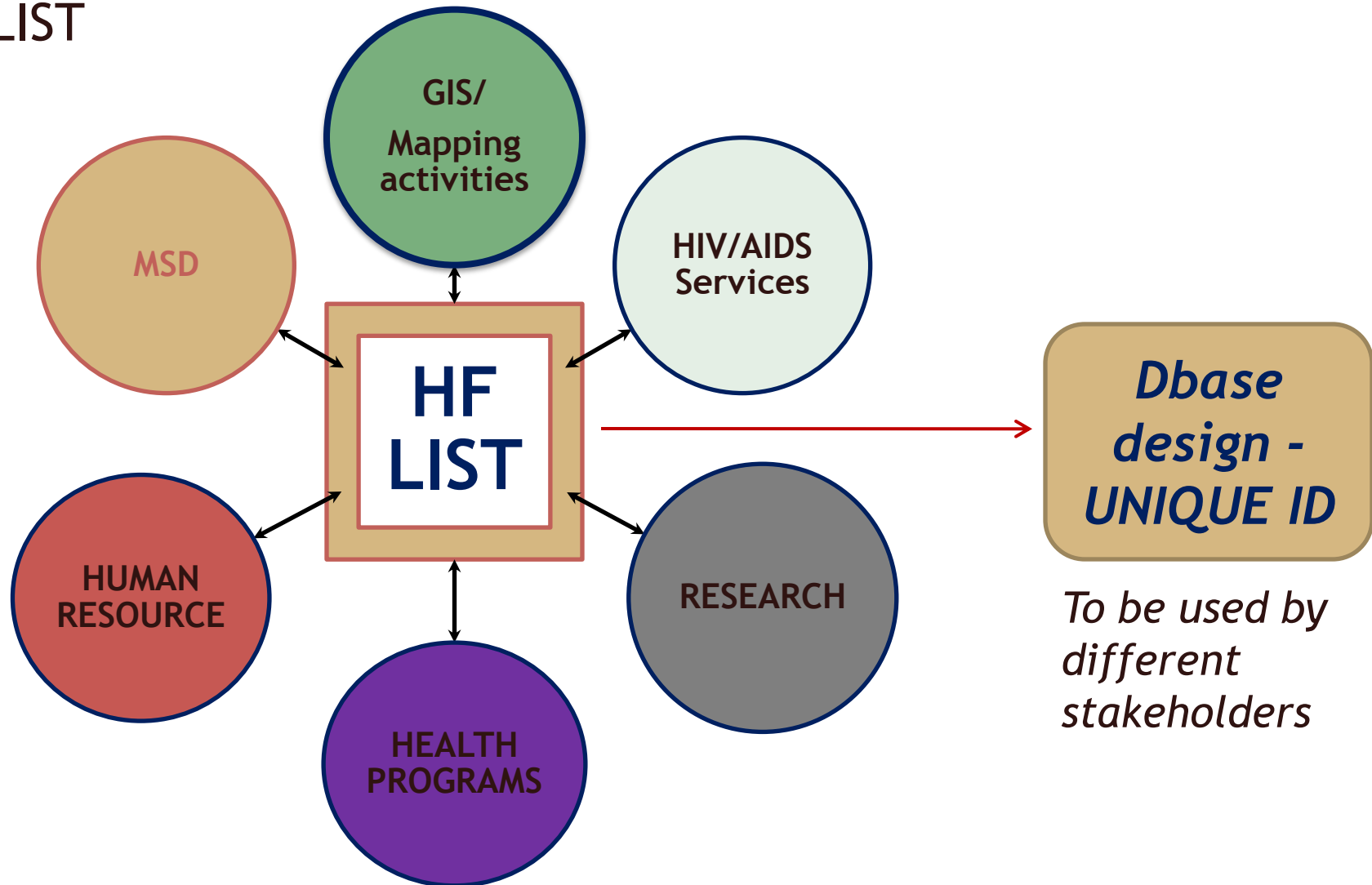
- Harmonize the mapping activities carried out by various sources
 - Specifically
 - Establish comprehensive list and assign unique codes (ID) for each health facility

Method

- Identified stakeholders
- Compile list
- Health facility GIS database design
 - Link with HIV services.
- Test usefulness using data for two regions was used

Method Cont...

Multiple Sources - form the
HF LIST



Goals Achieved

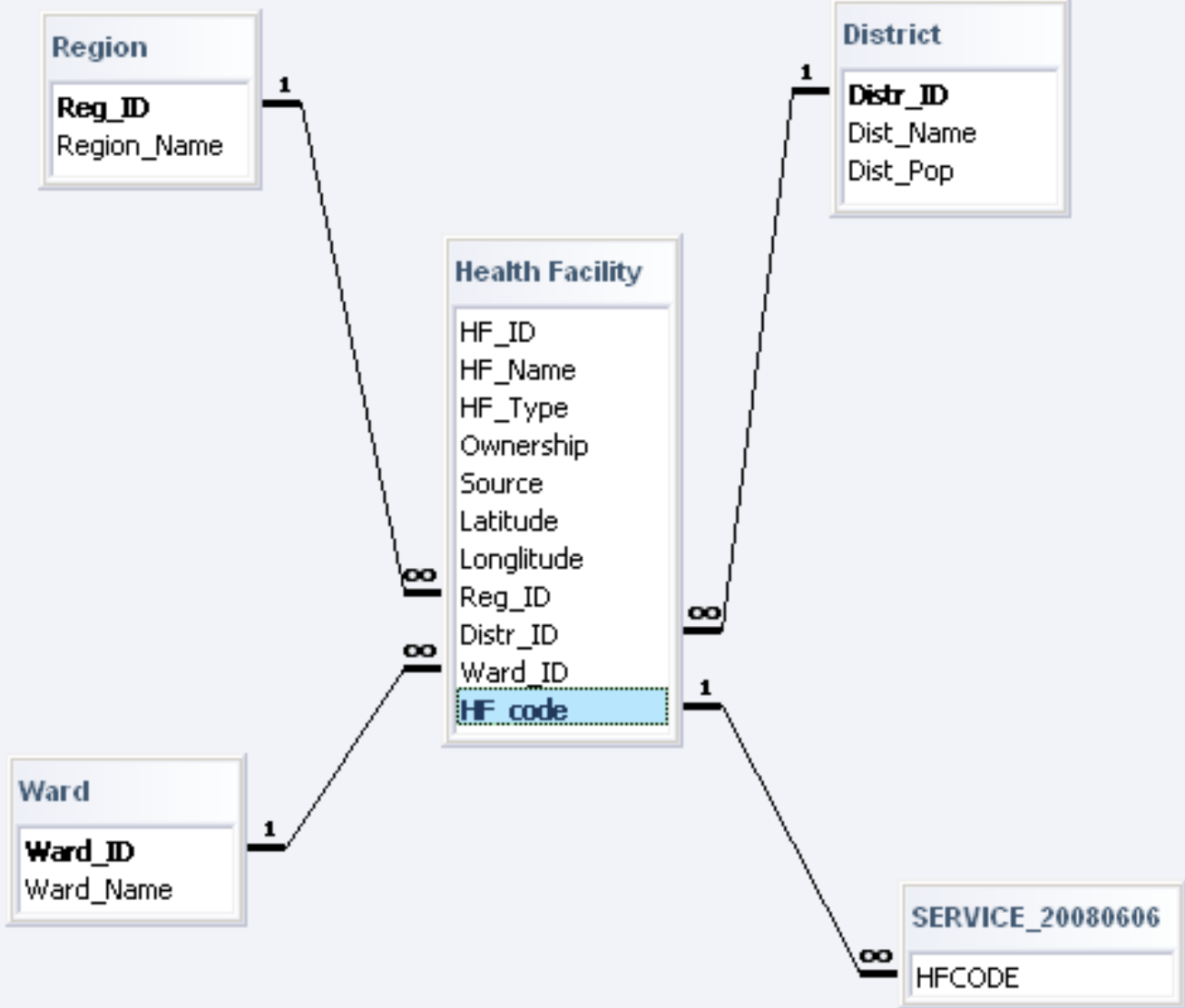
- List of all facility (public and private) established
 - Of the 5800 facilities
 - 3180 (55%) have their geographical locations

- Schema of the database



NIMR

Relationships



Unique Codes

- Why Unique
- Eliminates duplication
- Integration of data
 - Different facility-based datasets can be merged
- Create integrated National Health Database

Proposed Unique ID

❑ RRDD_HMMMI

- ❑ RR - Region codes allocated by NBS.
- ❑ DD - District codes allocated by NBS.
- ❑ _H - Separator and sector, e.g. H for Health
- ❑ MMM - MTHUHA (HMIS) number allocated by DMOs
- ❑ I - Identifier for Health Facility type (
 - ❑ *D* for dispensary,
 - ❑ *C* for health centre
 - ❑ *H* for Hospital

❑ 0102_H324D



NIMR

END

THANK YOU