

# Evaluation

MEASURE Evaluation has as part of its mandate from the United States Agency for International Development (USAID) the responsibility to build the evidence of what works to strengthen health information systems (HIS) and to improve health programs. We draw upon long experience conducting a wide range of evaluation types to add to global knowledge about health interventions and HIS strengthening.

Our experience covers building the evidence base about what works for health programs; the HIS strengthening effects resulting from improvements in routine health information systems; the effects of investments in HIV on other health systems; and the effects of adopting integrated or multisectoral programs and referral systems. Another area of expertise is the evaluation of structural interventions, such as those related to underlying gender norms. Our evaluations employ complexity-aware methods that consider contextual factors, such as leadership and governance, human capacity, parallel or competing information structures and programs, and unexpected events.

## Evaluation Highlights

**Evaluation methods.** MEASURE Evaluation has rich experience in all types of evaluations, including those that can be considered complexity-aware because of nonlinear chains of causation, many interacting variables, and external contextual factors. Methods include sentinel indicators, plausibility design, process monitoring, most significant change, outcome harvesting, network analysis, modeling, and causal loop diagrams, among others.

**Integration of gender.** MEASURE Evaluation offers concrete guidance on how organizations can comprehensively



Andrew Banda, a researcher at the University of Zambia in Lusaka, confers with a colleague during a three-week training held at MEASURE Evaluation offices in Chapel Hill, NC, for Zambian evaluation officers and faculty on data analysis and data visualization.

Photo by Wayne Hoover, MEASURE Evaluation

and explicitly integrate gender in monitoring and evaluation (M&E) systems and ensure that these systems are gender-sensitive for appropriate collection, analysis, and use of gender data for decision making. The project has evaluated programs and health systems to determine the effects of gender-integrated interventions on health outcomes and to what extent gender is included in a functioning M&E system.

**Disease areas.** MEASURE Evaluation has conducted rigorous evaluations of systems, policies, and programs in HIV/AIDS, emerging infectious diseases, malaria, tuberculosis, family planning and reproductive health, maternal and child health, nutrition and food security, and orphans and vulnerable children.

## Building Evaluation Capacity

The project also is charged to help build the capacity

of local professionals to conduct rigorous evaluations. MEASURE Evaluation combines the functions of evaluation implementation with experiential learning and training, coaching, and mentoring. Evaluation professionals can turn to the project for technical advice and tools as they implement evaluations, acquiring and reinforcing their skills in the process. We also support opportunities for formal training, through local and regional workshops and by incorporating advanced methods in graduate school curricula.

Through training and collaboration, MEASURE Evaluation is building the systems in countries to establish a pool of professionals within countries who, in time, will be able to conduct research and evaluations more independently and similarly transfer their evaluation expertise. Building this capacity is of utmost importance to the sustainability of our efforts and to gains made in programs and policies.

We also provide these other opportunities:

- Mentoring in rigorous evaluation methods, evaluation design, instrument development, stakeholder engagement, data analysis, communication, and data use activities
- Participating in our small-grants programs
- Building the capacity of partners and of master's degree-level instructors to offer or provide training in advanced evaluation methods, such as sampling and data analysis
- Participating in impact evaluation training, regional workshops, and online training
- Integrating gender considerations
- Conducting costing and cost-effectiveness analysis and analyses and training in geographic information systems and in stakeholder information needs assessments
- Archiving data and making data publicly available
- Producing cause-specific mortality measures

## Our Capabilities at a Glance

MEASURE Evaluation offers expertise in a full range of evaluation procedures:

- The development of rigorous study designs
- Protocol development
- Ethical research practices (including access to U.S.-based and in-country ethics review boards)
- Sample-size estimations
- Questionnaire development
- Statistical methods
- Costing methods
- Qualitative methods
- Biomarker measurement

To learn more about our capabilities, visit [www.measureevaluation.org](http://www.measureevaluation.org)

**Heidi Reynolds, PhD**

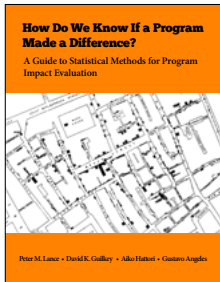
Director of Evaluation

**Sian Curtis, PhD**

Senior Advisor for Impact Evaluation

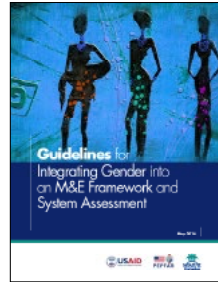
**Email:** [measure@unc.edu](mailto:measure@unc.edu)

## Key Evaluation Publications on Our Website



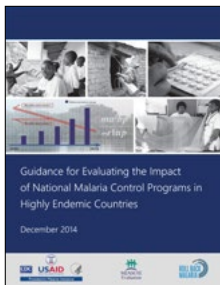
### How Do We Know if a Program Made a Difference? A Guide to Statistical Methods for Program Impact Evaluation

<http://www.measureevaluation.org/resources/publications/ms-14-87-en>



### Guidelines for Integrating Gender into an M&E Framework and System Assessment

<http://www.measureevaluation.org/resources/publications/tr-16-128-en>



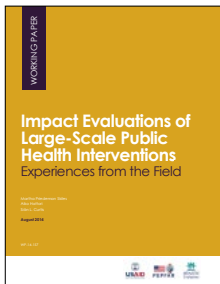
### Guidance for Evaluating the Impact of National Malaria Control Programs in Highly Endemic Countries

<http://www.measureevaluation.org/resources/publications/ms-15-100>



### Evaluation FAQ: How Much Will an Impact Evaluation Cost?

<http://www.measureevaluation.org/resources/publications/fs-15-156>



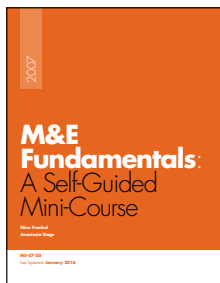
### Impact Evaluations of Large-Scale Public Health Interventions: Experiences from the Field

<http://www.measureevaluation.org/resources/publications/wp-14-157>



### Evaluation FAQ: What Sample Size Do I Need for an Impact Evaluation?

<http://www.measureevaluation.org/resources/publications/fs-15-157>



### M&E Fundamentals: A Self-Guided Mini-course

<https://www.measureevaluation.org/resources/publications/ms-07-20-en-epub>



### Types of Evaluations Conducted by MEASURE Evaluation

<https://www.measureevaluation.org/resources/publications/fs-15-158>



### Complexity-Aware Methods

<https://www.measureevaluation.org/resources/publications/fs-17-217>

## MEASURE Evaluation's Services

To access the project's capabilities statements, visit: <http://www.measureevaluation.org/about/services/capacity-statements>. To access MEASURE Evaluation resources, country governments should contact their local USAID mission. The mission, in turn, can contact the USAID AOR for MEASURE Evaluation, Kristen Wares (kwares@usaid.gov). For more information, e-mail [measure@unc.edu](mailto:measure@unc.edu) or go to our website: [www.measureevaluation.org](http://www.measureevaluation.org).