

MEASURE Evaluation's Work in Health System Strengthening

Global Models, Tools, and Resources to Measure and Improve Health Information System Performance

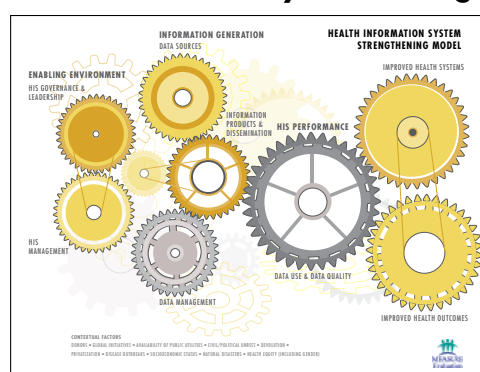
The [Learning Agenda](#) is MEASURE Evaluation's response to a request by the United States Agency for International Development (USAID) to explain the effects of investments in strengthening health information systems (HIS). As part of the Learning Agenda, we have launched the [Health Information System Strengthening Resource Center](#). The Resource Center serves as an online repository of learning, information sharing, and resources for HIS development and strengthening. This brief catalogs the resources that have been or are being developed under MEASURE Evaluation's HIS Learning Agenda for the Resource Center.

MEASURE Evaluation has been developing a validated, standard set of metrics and description of methods for use in HIS evaluation and strengthening. We started by designing the Health Information Systems Strengthening Model (HISSM), which frames what we are learning and standardizes the language we use to describe HIS functioning and performance. To inform the model and to catalog existing knowledge, we have thoroughly reviewed the work already done around HIS and HIS strengthening, carefully documenting the indicators being used to measure HIS performance. To inform the development of new metrics and tools, we have been engaging stakeholders on an ongoing basis, and we sought input from local country partners. In addition, we have regularly convened HIS experts from our six project partners and USAID, through technical advisory group (TAG) meetings, for feedback on the model, and on our proposed metrics, tools, and guidance. As part of this iterative process to learn and field-test our knowledge, we look to our experience as a USAID-funded cooperative agreement in implementing interventions and assessing HIS across countries. We also look to learn from and collaborate with established partnerships such as the [Health Data Collaborative](#). Our continued research and collaboration are part of an ongoing process to establish global HIS technical standards and to define a reasonable and transparent process to effectively strengthen HIS.

Below are descriptions of and links to MEASURE Evaluation's existing and planned resources, along with the intended use and audience for each.

The MEASURE Evaluation Resource Center: A Hub for What Works to Strengthen HIS

Health Information Systems Strengthening Model



MEASURE Evaluation's HISSM articulates the project's current understanding and guides ongoing learning about how HIS in low- and

middle-income countries (LMICs) are designed, developed, and implemented over time to support health systems and improve health outcomes. This model is a starting point for framing what we know now and the opportunities we have to learn more about the four main ways to strengthen HIS: promoting HIS as an essential tool of a health system, defining HIS strengthening, measuring HIS performance, and evaluating HIS interventions.

MEASURE Evaluation uses this model to describe how the work we do that is funded by USAID missions strengthens HIS performance and health system outcomes and health outcomes. This model will be of interest to other donors and groups who are working to strengthen HIS in LMICs.

HIS Indicator Registry

The HIS Indicator Registry is a repository of indicators that are used to evaluate HIS performance. Indicators are drawn and cited from existing tools, reports, and guidance. Indicators range from national to facility level and are categorized in the following ways:

- By HISSM elements, cross-referenced as needed
- By type of indicator (input, output, outcome)

We are collecting additional indicators to refine this registry (completion expected in 2017).

The audience for this indicator registry is people who are looking for indicators to assess HIS performance.

HIS Country Profiles

As part of the HIS Strengthening Resource Center, we have created HIS country profiles, which have the following purposes:

- Show the status of HIS in focus countries where USAID is working to achieve the goals of ending preventable child and maternal deaths (EPCMD) and an AIDS-free generation, using a set of 21 indicators
- Create a baseline for the selected countries to measure changes in these HIS indicators over time
- Help participating countries share information and learn from one another

We selected the 21 indicators based on existing guidance and availability of documents. Indicators cover each area of the HISSM and include a country’s national health strategy, HIS strategic plan, master facility list, national health surveys, and more. We will select additional indicators in 2017, bringing the number to 30.



The audience for these profiles is anyone with an interest in the state of HIS across multiple countries.

HIS Assessment Tool Matrix

The HIS Assessment Tool Matrix will serve as a catalog of available HIS assessment tools, describing each tool’s purpose, strengths, limitations, and any validation. The purpose of this matrix is to describe the tools so that countries can choose the most useful tool for their purposes (completion expected in 2017).

The audience for this matrix is people who are looking for tools to assess HIS or components of HIS.

Tool Name	Indicator	Program	Last Update	Version	Program	How required for implementation/monitoring of assessment	Specific of Data	Required Data
PHSM (Comprehensive)	PHSM	The comprehensive PHSM tool can be used for in-depth monitoring of the overall HIS performance in a program.	2013 updated in progress	1.0	Global setting	Required to implement, can be used prior to and following a planning period or following a full assessment	PHSM	PHSM
HIS Diagnostic Tool	Diagnostic Tool	Ability for use at national level, business technical organizations, and at the district level of planning and implementation systems in the health sector. Diagnostic tool, and business technical organizations. Scales of the tool are: national, regional, and district. It is designed to assess the overall performance of the health sector and to identify areas for improvement.	2008	1.0	Global setting	Analysis	PHSM, Data source (national level)	PHSM, Data source (national level)
Performance Diagnostic Tool	Performance Diagnostic Tool	Assesses the overall performance of the health sector and to identify areas for improvement. It is designed to assess the overall performance of the health sector and to identify areas for improvement.	2013	1.0	Global setting	PHSM to a planning period	PHSM, Data source (national level)	PHSM, Data source (national level)
Electronic HIS Performance Tool	Electronic HIS Performance Tool	Assesses the overall performance of the health sector and to identify areas for improvement. It is designed to assess the overall performance of the health sector and to identify areas for improvement.	2013	1.0	Global setting	PHSM to a planning period	PHSM, Data source (national level)	PHSM, Data source (national level)
Management Assessment Tool	Management Assessment Tool	Assesses the overall performance of the health sector and to identify areas for improvement. It is designed to assess the overall performance of the health sector and to identify areas for improvement.	2013	1.0	Global setting	PHSM to a planning period	PHSM, Data source (national level)	PHSM, Data source (national level)
Facility/HR Checklist	Facility/HR Checklist	Assesses the overall performance of the health sector and to identify areas for improvement. It is designed to assess the overall performance of the health sector and to identify areas for improvement.	2013	1.0	Global setting	PHSM to a planning period	PHSM, Data source (national level)	PHSM, Data source (national level)
Organizational Behavioral Assessment Tool (OBAT)	Organizational Behavioral Assessment Tool (OBAT)	Assesses the overall performance of the health sector and to identify areas for improvement. It is designed to assess the overall performance of the health sector and to identify areas for improvement.	2013	1.0	Global setting	PHSM to a planning period	PHSM, Data source (national level)	PHSM, Data source (national level)
Data Quality Review (DQR)	DQR	Assesses the overall performance of the health sector and to identify areas for improvement. It is designed to assess the overall performance of the health sector and to identify areas for improvement.	2013	1.0	Global setting	PHSM to a planning period	PHSM, Data source (national level)	PHSM, Data source (national level)
Data Quality Audit (DQA)	DQA	Assesses the overall performance of the health sector and to identify areas for improvement. It is designed to assess the overall performance of the health sector and to identify areas for improvement.	2013	1.0	Global setting	PHSM to a planning period	PHSM, Data source (national level)	PHSM, Data source (national level)

HIS Performance Assessment Toolkit for HIS Managers

This is a guide and tool for HIS managers to take quick stock of the validity, reliability, and completeness of data generated across each data source (forthcoming). These data are used to plan an annual health strategy, identify additional HIS assessment tools, and set priorities for HIS strengthening.

The audience for this tool is HIS managers in LMICs at national and subnational levels who want to assess their HIS or components of the HIS.

HIS Reference Guide for Data Source Standards

This is a compilation of existing international standards for the 12 HIS data sources identified in the HIS Performance Assessment Toolkit. This guide will serve as a complementary resource for HIS managers using the toolkit (forthcoming).

The audience for this reference guide is HIS managers in LMICs at national and subnational levels who want to assess their HIS or components of the HIS.

For more information, e-mail measure@unc.edu or go to our website: www.measureevaluation.org.

