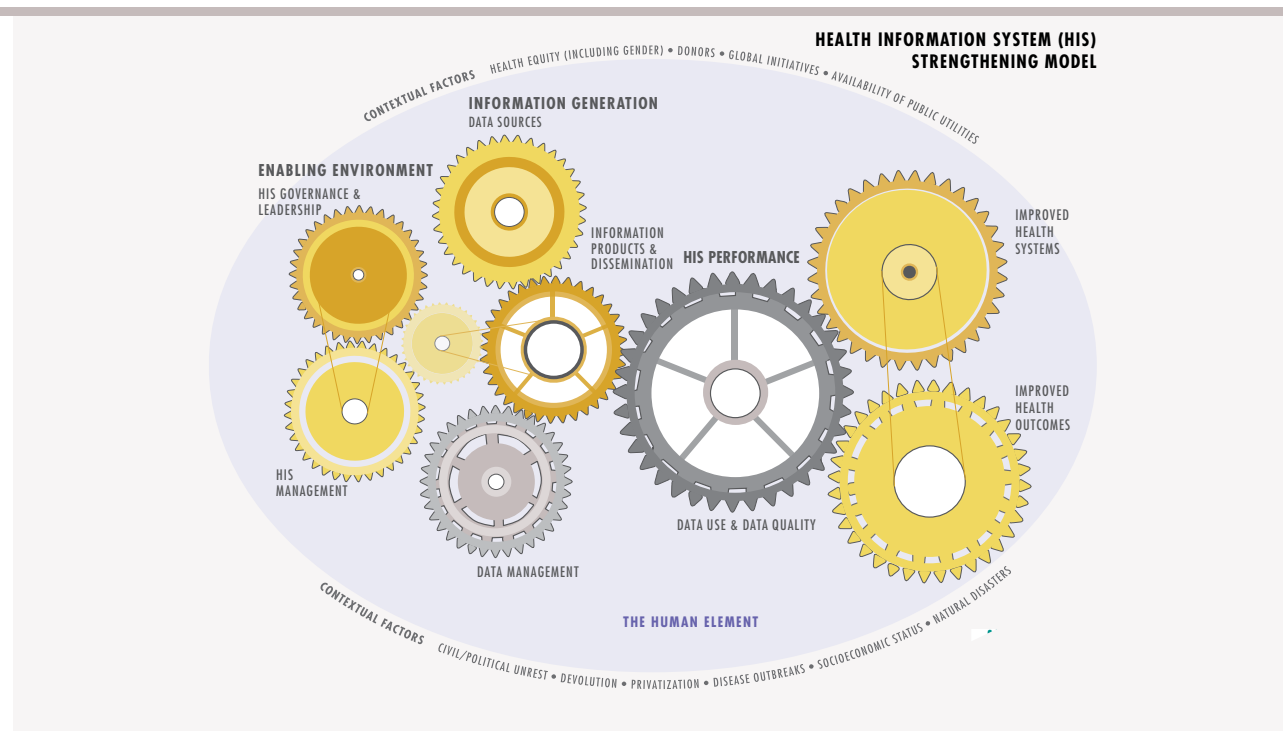


Strengthening Health Information Systems in Nigeria— Developing a Master Facility List

MEASURE Evaluation, which is funded by the United States Agency for International Development, has worked in Nigeria from 2005–2019 to improve the availability of high-quality data to support decision making at all levels of the health system. An important part of this has been MEASURE Evaluation’s work to support the Department of Health Planning, Research and Statistics (DHPRS) of Nigeria’s Federal Ministry of Health (FMOH) to develop a master facility list (MFL) to improve data quality and ultimately lead to better coordination of health services. The availability of an MFL and corresponding health facility registry (HFR) strengthens the overall health information system (HIS) identified in MEASURE Evaluation’s [Health Information System Strengthening Model](#) (HISSM), shown to the right. These improvements correspond with specific areas of the model.

For example, in the model’s area of an enabling environment for a strong HIS, MEASURE Evaluation convened various institutional heads and stakeholders in a technical working group to promote joint planning in developing the MFL. In the information generation area, MEASURE Evaluation has supported the FMOH to develop and roll out the MFL and HFR and integrate them with the national HIS.

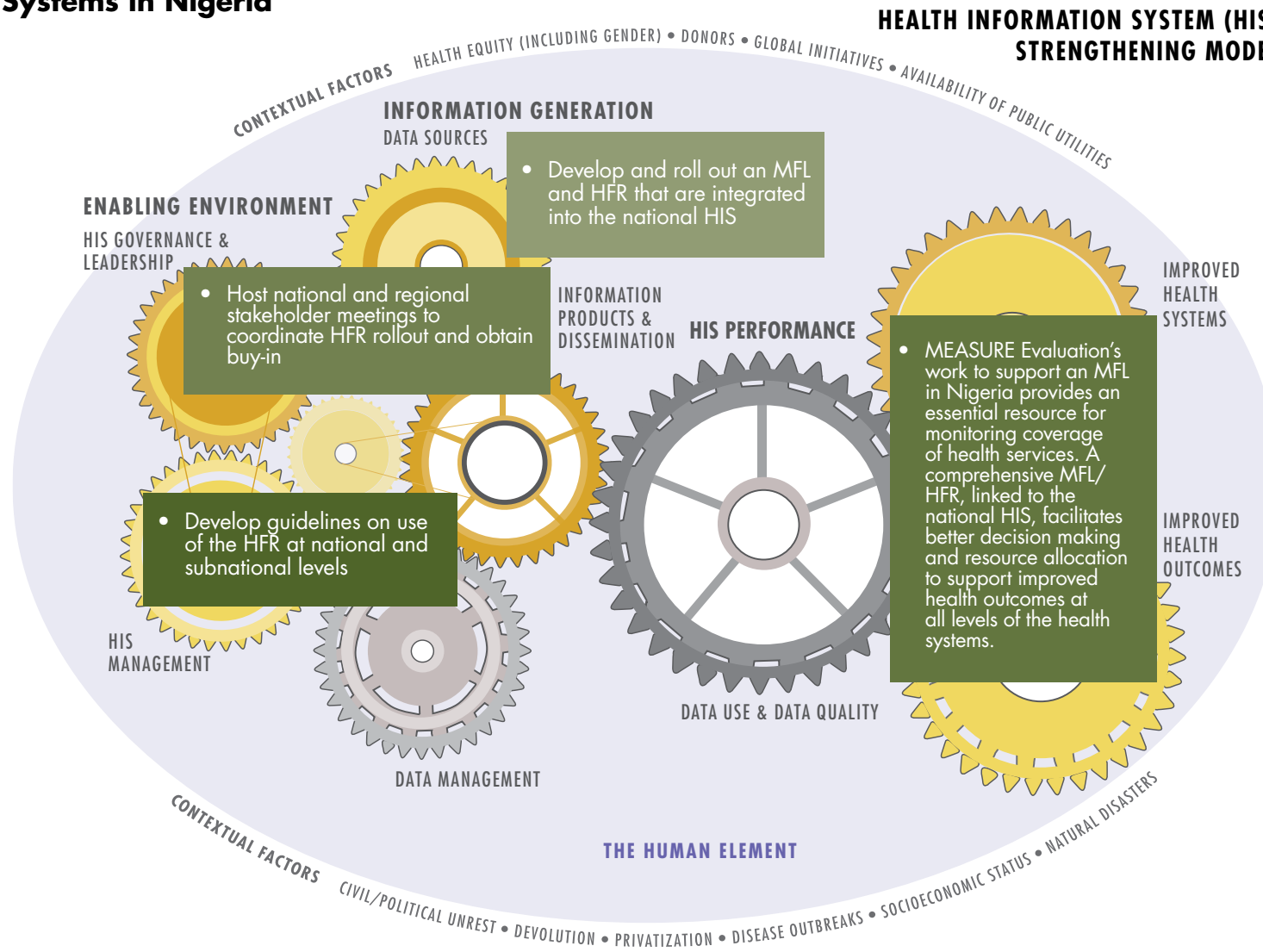
The graphic to the right superimposes on the HISSM depictions of MEASURE Evaluation’s activities in the



enabling environment and information generation areas to support HIS performance. By displaying these key interventions across the HISSM, we see their strategic interaction, and how this combination of interventions works together to strengthen data quality and data use at all levels of the health system. The table below lists additional MEASURE Evaluation activities that support HIS strengthening that

accompanied development of the MFL and HFR. As a result of these interventions, we expect to see improved quality of the data available in the MFL and increased use of HIS data to allocate resources and plan for service delivery. For more information on the Nigeria MFL, see <https://www.measureevaluation.org/resources/publications/tr-18-267>.

MEASURE Evaluation's Work to Support Unified Data Systems in Nigeria



MEASURE Evaluation's Other HIS Strengthening Work in Nigeria

HISSM areas	HISSM subareas (gears)	Health information system strengthening activities			
		2016	2017	2018	2019
Enabling environment	HIS governance and leadership	<ul style="list-style-type: none"> Provide support to the FMOH to establish technical working groups (TWGs) to create and implement the HFR and MFL 	<ul style="list-style-type: none"> Support the inaugural Health Data Governance Council meeting Support establishment of an MFL TWG to coordinate stakeholders to update missing HFR data Harmonize and integrate indicators into the national health management information system 	<ul style="list-style-type: none"> Support the MFL TWG to revise its terms of reference for new members Support the TWG to validate the monitoring and evaluation (M&E) framework for MFL implementation and MFL standard operating procedures (SOPs) Support DHPRS to secure permanent hosting of the HFR 	<ul style="list-style-type: none"> Participate in the MFL TWG
	HIS management		<ul style="list-style-type: none"> Develop guidance and training materials for HFR data collection Train master data collection officers on the HFR 	<ul style="list-style-type: none"> Develop an M&E framework for MFL implementation Conduct assessments with HFR system users, administrators, architects, and developers to inform plans for capacity building Support DHPRS to develop SOPs to inform facility registration processes and workflows within the HFR Train central level staff on MFL/HFR SOPs Train the FMOH ICT team on migration of the HFR application between servers Support the FMOH to map HFR and District Health Information Software, version 2 (DHIS 2) facilities, which is the first step toward integration of the HFR and DHIS 2 Train FMOH ICT team on using QGIS to produce analytical maps to visualize MFL data quality 	<ul style="list-style-type: none"> Train MFL TWG members on use of the MFL/HFR platform, in preparation for rollout and cascade trainings at the local level Develop HFR manuals and software design documents, in preparation for handover of the MFL to the FMOH this year
Information Generation	Data sources				<ul style="list-style-type: none"> Customize the HFR to include advanced functionality and hold user acceptance testing sessions to validate improvements Link the MFL/HFR with the DHIS 2

This publication was produced with the support of the United States Agency for International Development (USAID) under the terms of MEASURE Evaluation cooperative agreement AID-OAA-L14-00004. MEASURE Evaluation is implemented by the Carolina Population Center, University of North Carolina at Chapel Hill in partnership with ICF International; John Snow, Inc.; Management Sciences for Health; Palladium; and Tulane University. Views expressed are not necessarily those of USAID or the United States government. FS-17-235a-Revised-2019

