

Monitoring Outcomes of PEPFAR Orphans and Vulnerable Children Programs in Nigeria

Widows and Orphans Empowerment Organizations (WEWE)

2016 Survey Findings

Purpose

As part of its monitoring, evaluation, and reporting (MER) guidance, the United States President's Emergency Plan for AIDS Relief (PEPFAR) launched a set of outcome indicators for orphans and vulnerable children (OVC) programs in 2014. The purpose of collecting the MER OVC Essential Survey Indicators is to obtain a snapshot of program outcomes at one point in time (Round 1) and to assess changes in outcomes among OVC program beneficiaries over time (Round 2). MEASURE Evaluation, funded by the United States Agency for International Development and PEPFAR, conducted this Round 1 survey in the scale-up LGAs of Akwa-Ibom State.

Project Description

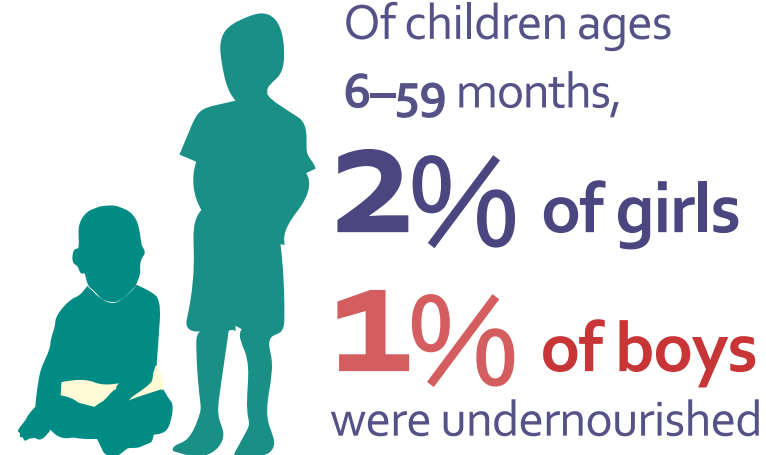
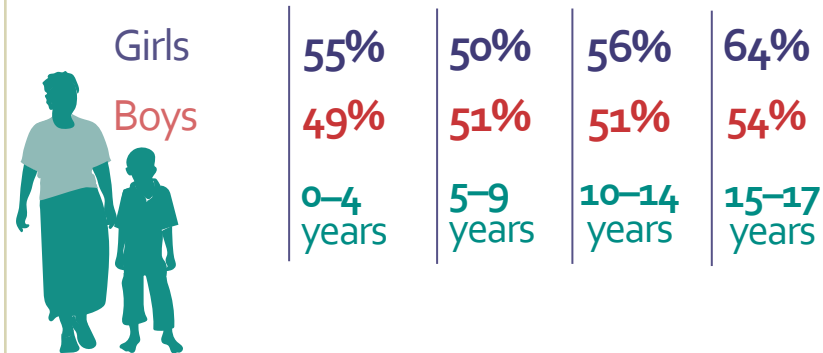
WEWE/LOPIN is a Nigeria not-for-profit organization supported by PEPFAR in Region 2 (Imo, Anambra, Akwa-Ibom, and Rivers States) since July 17, 2014. LOPIN-2 activities began in Imo and Anambra States in 2014 and expanded to Rivers and Akwa-Ibom in October 2015. The LOPIN-2 project in Akwa-Ibom State operates in three LGAs—Oron, Uyo, and Ikot-Ekpene—and offers the following services: health, nutrition, shelter, education and training, psychosocial, protection and Establishment of village savings and loans associations (VSLAs).

This publication was produced with the support of the United States Agency for International Development (USAID) under the terms of MEASURE Evaluation cooperative agreement AID-OAA-L-14-00004. MEASURE Evaluation is implemented by the Carolina Population Center, University of North Carolina at Chapel Hill in partnership with ICF International; John Snow, Inc.; Management Sciences for Health; Palladium; and Tulane University. Views expressed are not necessarily those of USAID or the United States government. GR-17-009

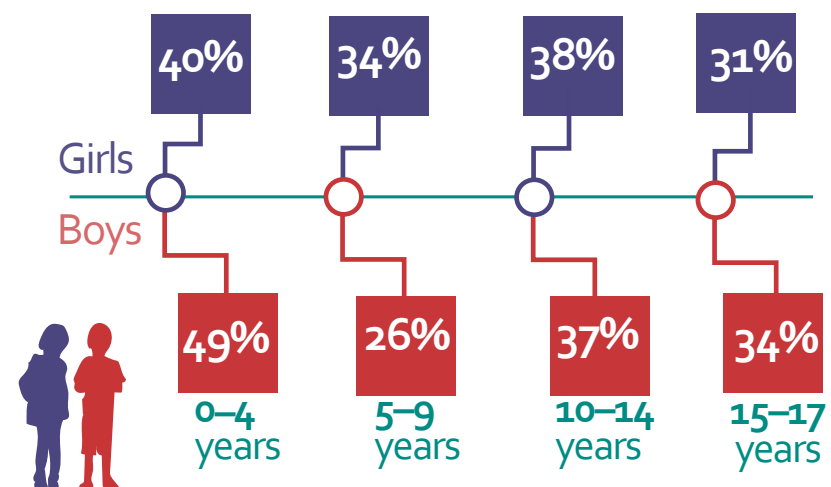


HEALTH

53% of children have a primary caregiver who knows the child's HIV status, based on an HIV test



Children ages 0-17 years, who were too sick to participate in daily activities



ECONOMIC WELL-BEING AND RESILIENCE

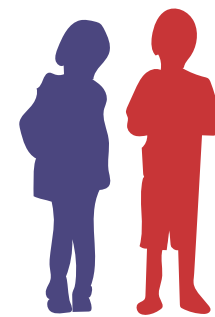
11% of households were able to access money



to pay for unexpected household expenses

LEGAL PROTECTION

Girls and boys who have a **verified birth certificate**



20% of girls
20% of boys

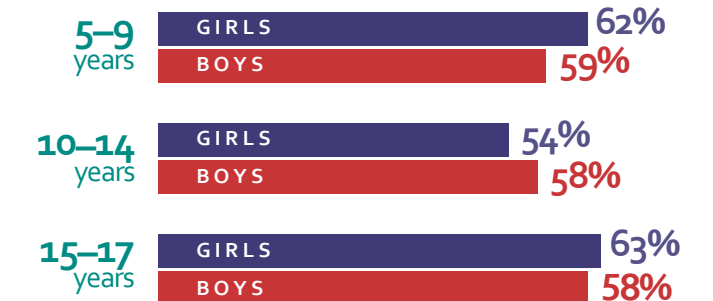
CHILD PROTECTION

78% of caregivers agree that harsh physical punishment is an appropriate means of discipline in the home or school

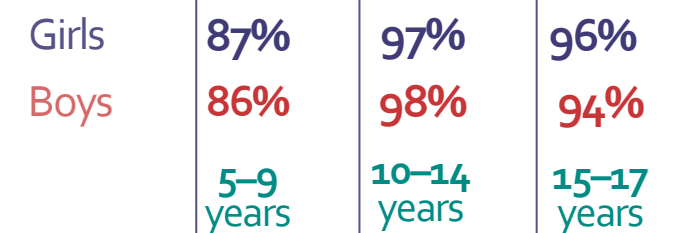


EDUCATION

Children regularly **attending school**



Children who progressed to a more advanced level in school



94% of children < 5 recently engaged in **stimulating activities**

