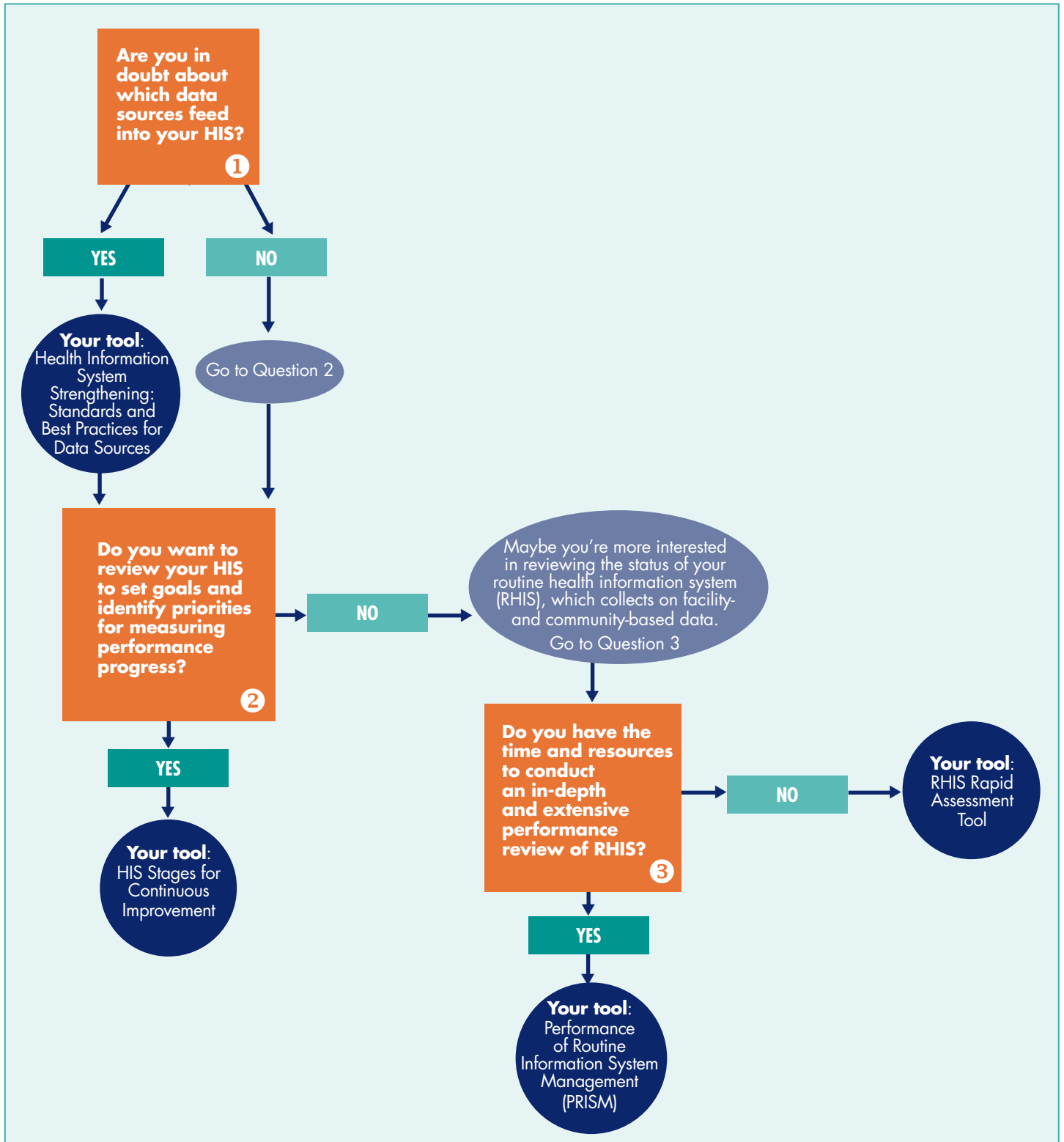


What is the status of my health information system (HIS) and what steps can I take to identify gaps in HIS performance?



1 Are you in doubt about which data sources feed into your HIS?

Your tool: Health Information System Strengthening: Standards and Best Practices for Data Sources
<https://www.measureevaluation.org/resources/hisdatasourcesguide/standards-and-practices>

Intended user: National health authorities and health information officers in ministries of health

What: A resource guide to align HIS data sources with standards and best practices, so that data can be trusted to produce comparable statistics at all levels of the health system

Investment: Time required to use this open-source resource guide to inform HIS policy and planning

Tool output: Tool is a reference guide; does not include an HIS assessment

2 Do you want to review your HIS to set goals and identify priorities for measuring performance progress?

Your tool: Health Information Systems Stages for Continuous Improvement
<https://www.measureevaluation.org/his-strengthening-resource-center/his-assessment-tools/index.html/tool?ToolId=59>

Intended user: National-level or subnational HIS manager

What: Assesses status of national HIS and future goals for HIS capabilities in the domains of HIS leadership and governance, management and workforce, technology infrastructure, standards and interoperability, and data quality and use; helps users identify next steps to improve HIS performance to meet organizational or country-level needs

Investment: 1-day workshop for relevant HIS stakeholders to complete automated assessment and inform HIS planning

Tool output: Scale measures 5 HIS domains and 40 subcomponents to establish baseline; useful to determine intervention strategy to strengthen HIS

3 Do you have the time and resources to conduct an in-depth and extensive performance review of RHIS ?

Yes. Your tool: Performance of Routine Information System Management (PRISM) Tools
<https://www.measureevaluation.org/resources/tools/health-information-systems/prism>

Intended user: Can be used in a supervisory capacity by HIS managers and adapted and applied at international, national, or subnational levels

What: Used to monitor data quality and evaluate RHIS performance over time and gauge the efficacy of designed interventions to improve the information system; can be adapted for nonroutine data sources, such as surveillance

Investment: Depending on assessment scope and sample size, may require several weeks to several months for desk and data review, sufficient sampling of health facilities, and interviews with relevant stakeholders

Tool output: Provides detailed spreadsheets with descriptive quantitative statistics, broken down by unit of analysis (district, province, etc.), for monitoring of trends in data quality and information use over time

No. Your Tool: RHIS Rapid Assessment Tool
<https://www.measureevaluation.org/his-strengthening-resource-center/his-assessment-tools/index.html/tool?ToolId=8>

Intended user: RHIS managers, program managers, and data managers from the national or regional level

What: A rapid way to identify gaps in information systems, by measuring adherence to identified, internationally recognized standards; can be implemented as needed, prior to information system reforms or for strategic planning

Investment: 1- to 2-day facilitator-guided workshop with relevant stakeholder groups (specific to level of the health system); alternatively, a checklist completed by individuals and aggregated at a central level

Tool output: Bar charts derived automatically by the Excel-based tool, with areas color-coded to show if they do or do not meet global standards