

CENSUS INTERVIEWER'S WORKBOOK

SAVVY

Sample Vital Registration with Verbal Autopsy



MEASURE Evaluation
U.S. Census Bureau

Census Interviewer's Workbook

SAVVY

Sample Vital Registration with Verbal Autopsy



USAID
FROM THE AMERICAN PEOPLE



MEASURE
Evaluation

U S C E N S U S B U R E A U

Helping You Make Informed Decisions

This manual was made possible by support from the U.S. Agency for International Development (USAID) under the terms of Cooperative Agreement GPO-A-00-03-00003-00 and from the Office of the Global AIDS Coordinator (OGAC). The opinions expressed are those of the authors and do not necessarily reflect the views of USAID, OGAC, or the United States government.

August 2007

MS-07-26-CI-WB

Acknowledgments

This workbook is one of a series of instructional materials for the Sample Vital Registration with Verbal Autopsy (SAVVY) system prepared by the International Programs Center, Population Division, U.S. Census Bureau, Washington, DC; and MEASURE Evaluation project, based at the University of North Carolina at Chapel Hill, Chapel Hill, NC, USA

This workbook was written by Rebecca Hoffman of the U.S. Census Bureau.

Series editors: Philip Setel, Victoria Velkoff, and Loraine West.

The author wishes to express appreciation for review and comment by numerous colleagues, including Sarah Osborne and Manisha Sengupta of the U.S. Census Bureau. Copy editing and layout were handled by Nash Herndon of MEASURE Evaluation.

Table of Contents

Exercise 1 5

Exercise 2 7

Exercise 3 9

Exercise 4 11

Figure 1. SAVVY Census Assignment Area Sample Map 12

**Figure 2. SAVVY Census Assignment Area Sample Map— First Block
Completed 13**

Figure 3. Block 2 of Assignment Area Sample Map 14

Figure 4 Drawing of Abbotsville..... 15

EXERCISE 1

Exercise 1 involves identifying separate housing units and households. Please read the following canvassing situation descriptions and answer the questions following each situation.

Situation A: The Smith family owns a house. The Smith family rents two rooms in their house to a Mr. and Mrs. Jones. The Jones family's rooms are only accessible by walking through part of the Smith family's living area. The Jones family pays the Smith family to eat with the Smiths, in addition to paying rent.

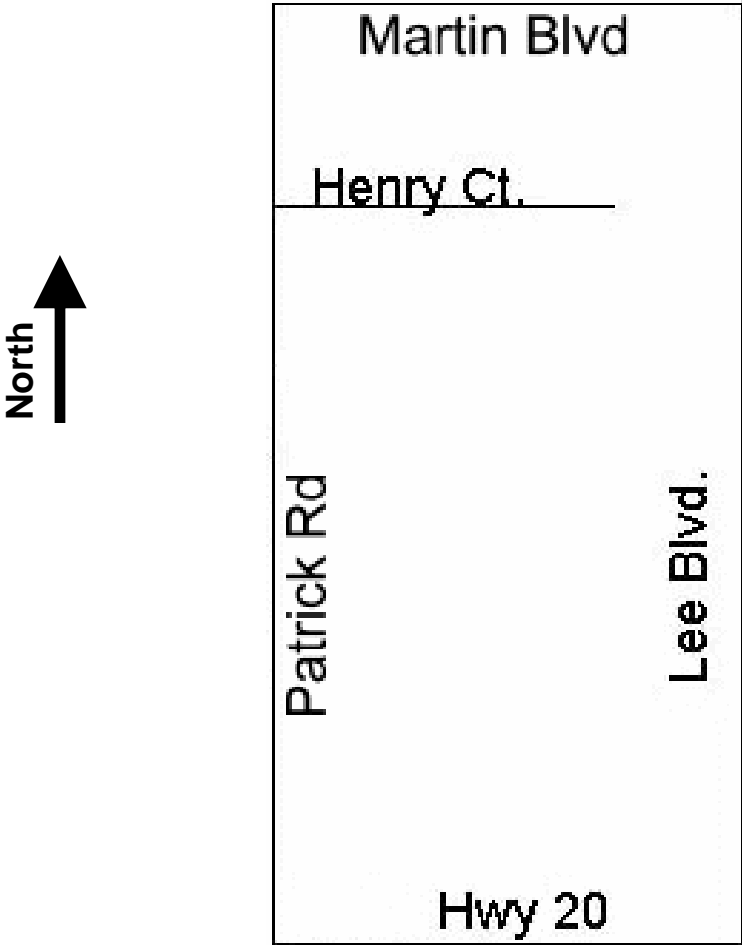
1. Does the Jones family occupy a separate housing unit?
2. Is the Jones family a separate household?
3. Should the Jones family be listed on a separate line in the listing booklet?
4. Should the Jones family be enumerated on a separate questionnaire?

Situation B: The Smith family owns a house. A daughter of the Smith family and the daughter's husband live in a small building that is located on the Smith family property. Their small building is separated from the Smith family house. The daughter and her husband do not pay rent and share with the rest of the Smith family to provide food and other essentials.

1. Do the daughter and her husband occupy a separate housing unit?
2. Should the daughter and her husband be listed on a separate line in the listing booklet?
3. Are the daughter and her husband considered to be a separate household?
4. Should the daughter and her husband be enumerated on a separate questionnaire?

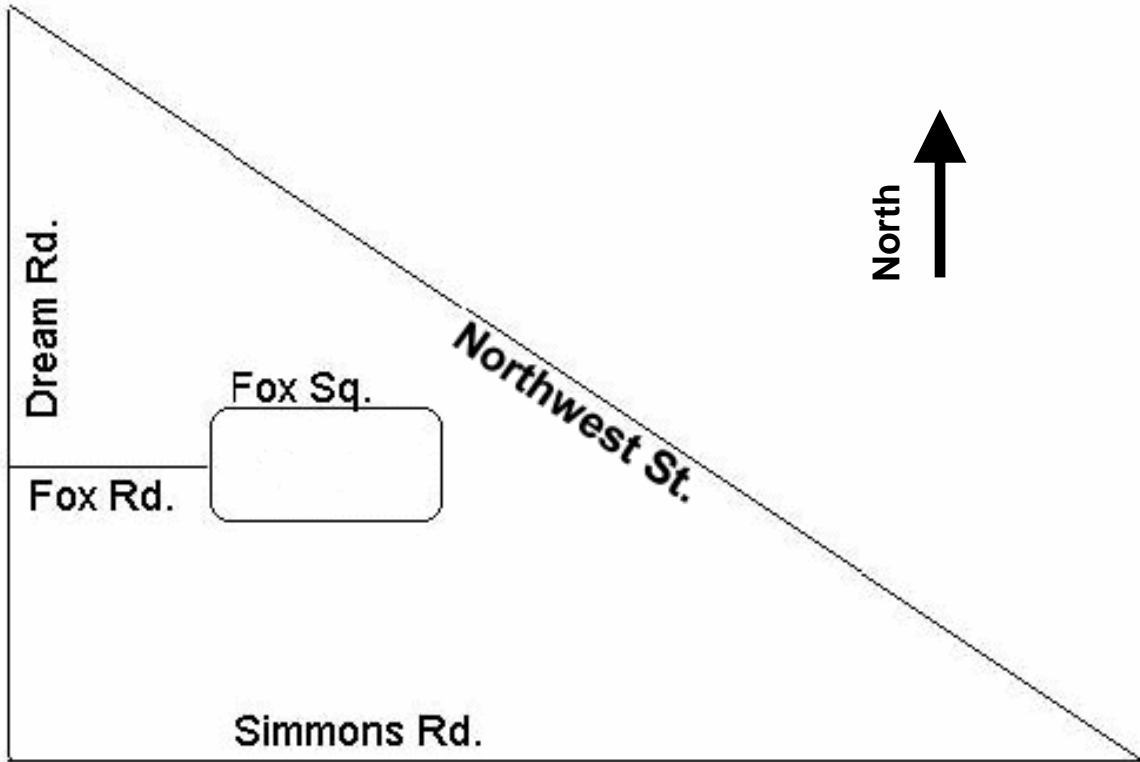
EXERCISE 2

In the figure below, select a starting point, indicated with an “X,” and draw lines with arrows showing the direction that you would use to canvass these streets, including the interior road.



EXERCISE 3

Indicate your starting point with an "X" and your path of travel with lines and arrows. Indicate the order of block canvassing by placing a number "1" in the first block that you would canvass and a number "2" in the second block that you would canvass.



EXERCISE 4

In the following illustration, use the provided map scale below to determine the distance between the corner of Third and Main Streets and the Foot Path, or the distance between “X” and “Y”.

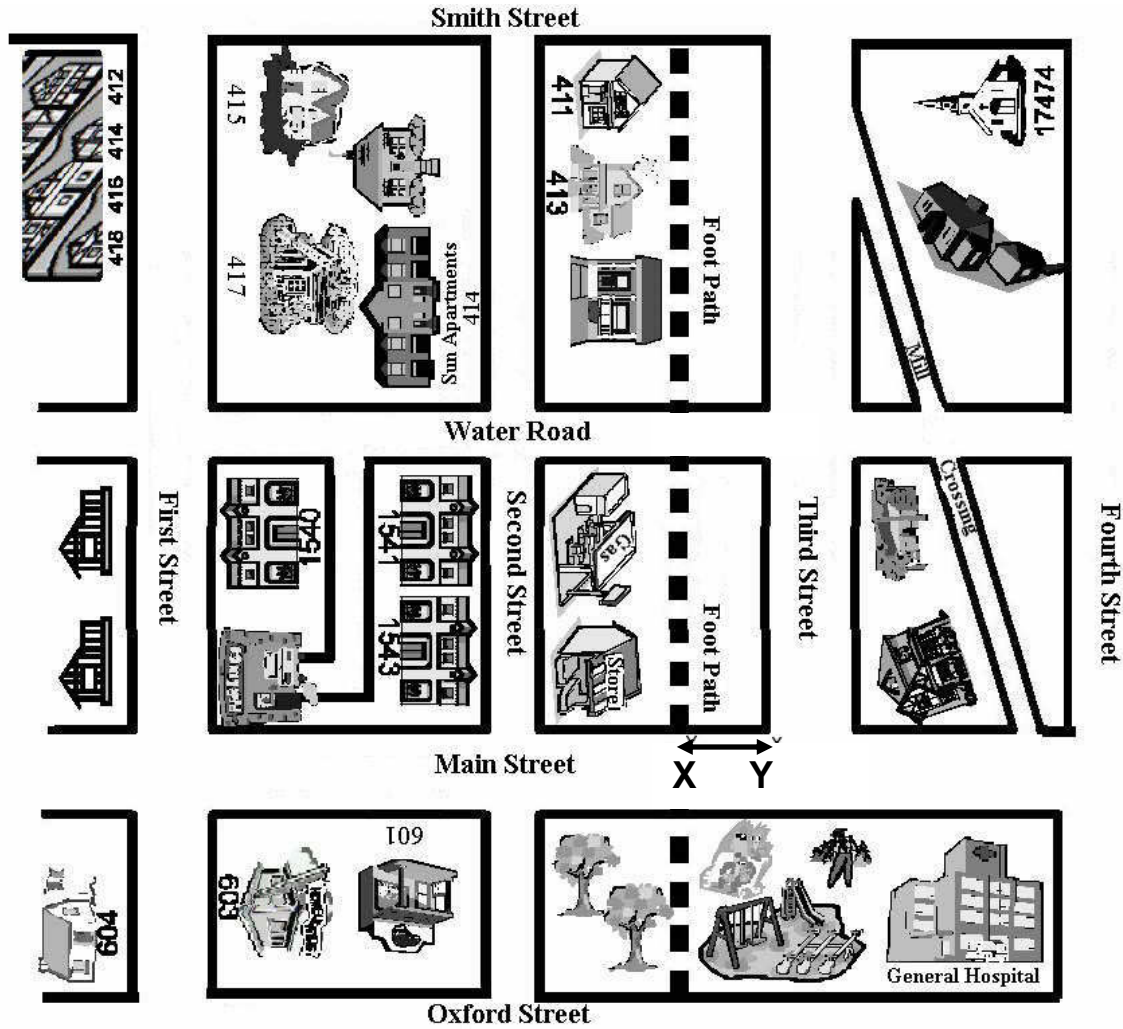
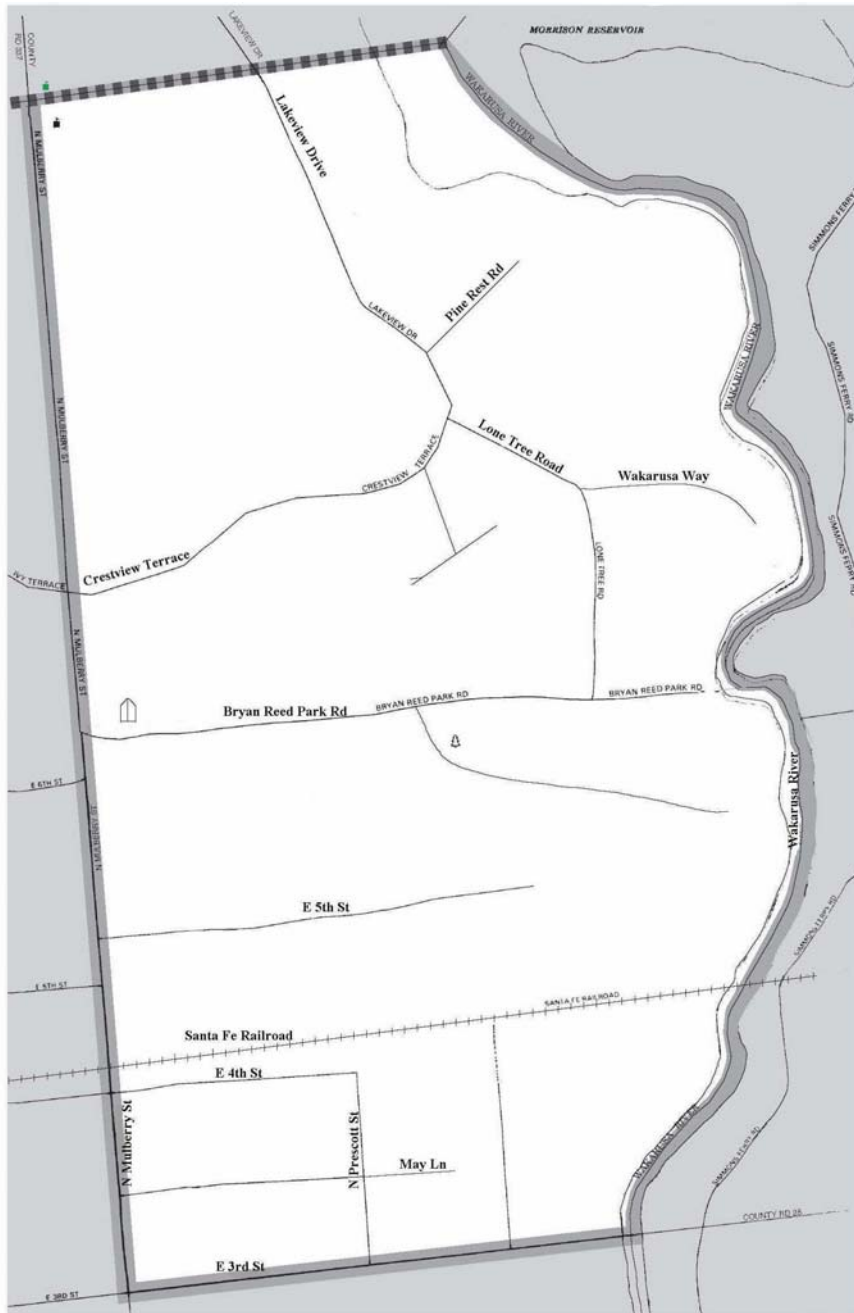
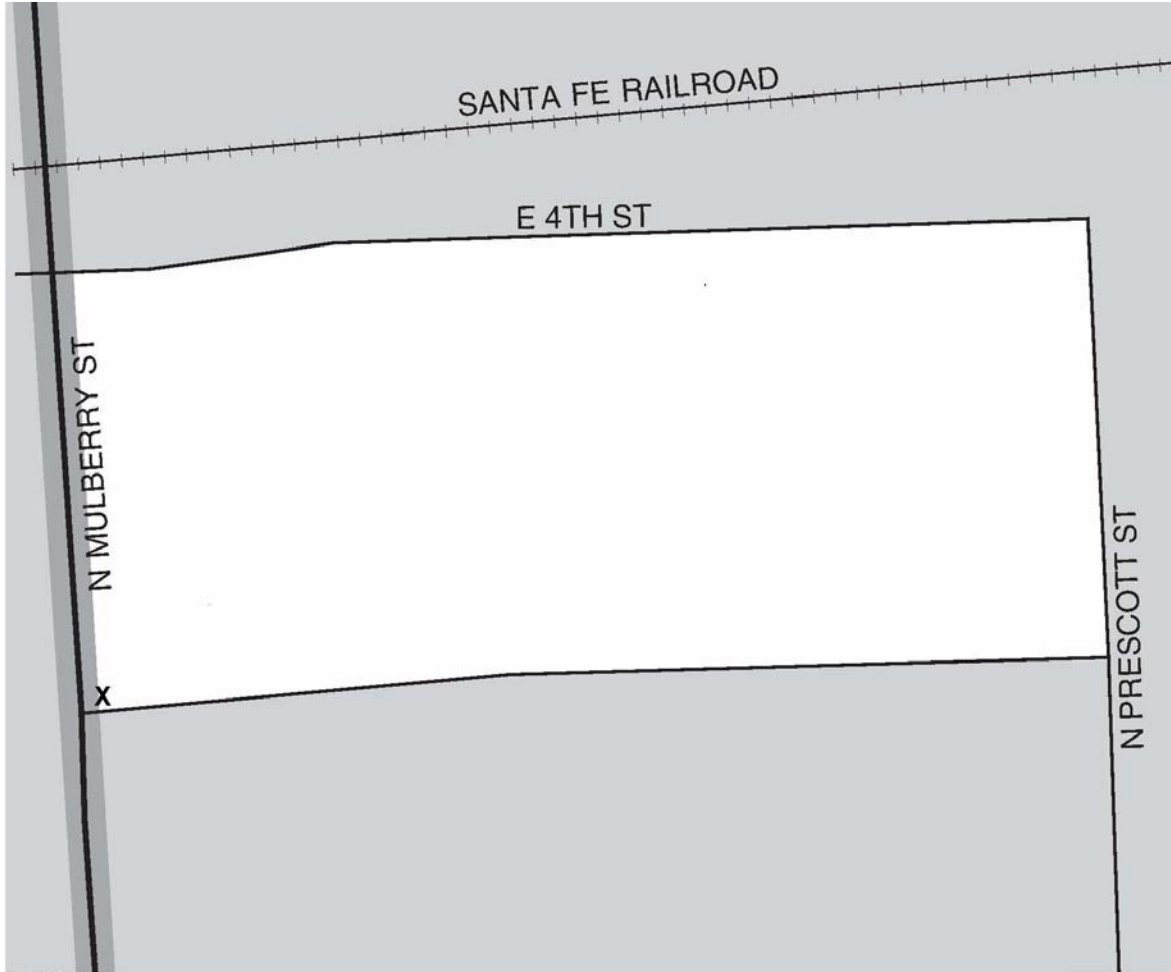


FIGURE 1. SAVVY CENSUS ASSIGNMENT AREA SAMPLE MAP



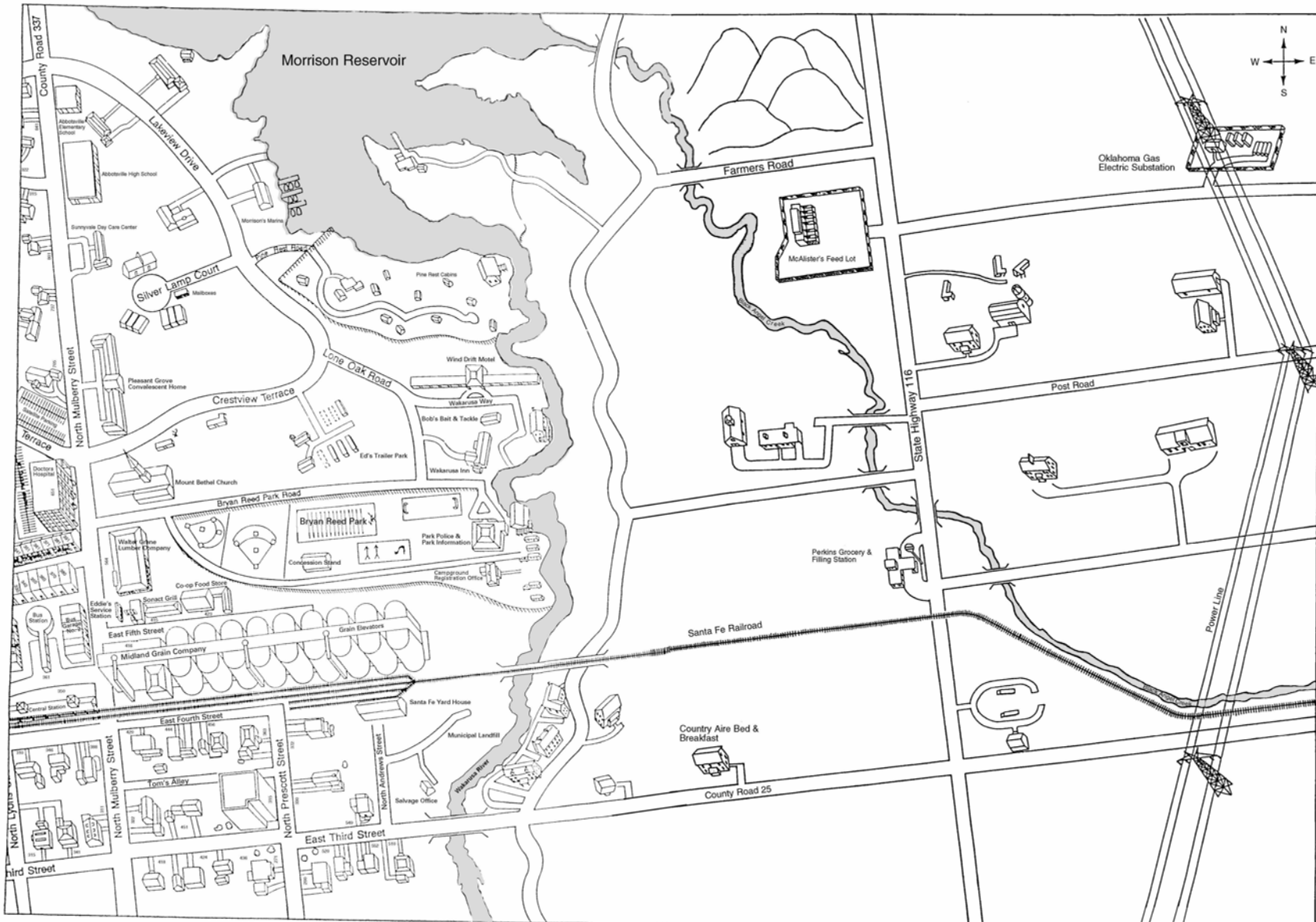
Place: Abbotsville – 425
Cluster number :010
AA number: 001

FIGURE 3. BLOCK 2 OF ASSIGNMENT AREA SAMPLE MAP



**Place: Abbotsville – 425
Cluster number :010
AA number: 001
Block 2**

FIGURE 4. DRAWING OF ABBOTSVILLE



MEASURE Evaluation
Carolina Population Center
University of North Carolina at Chapel Hill
CB 8120, 123 W. Franklin St.
Chapel Hill, NC 27516 USA
www.cpc.unc.edu/measure

International Programs Center
Population Division
U.S. Census Bureau
Washington, DC 20233
www.census.gov

MS-07-26-CI-WB



USAID
FROM THE AMERICAN PEOPLE



USCENSUSBUREAU
Helping You Make Informed Decisions