

High HIV burden |

Population 2009 (millions) 42

Estimates of burden * 2009	Number (thousands)	Rate (per 100 000 pop)
Mortality (excluding HIV)	98 (6.8–13)	23 (16–32)
Prevalence (incl HIV)	87 (40–140)	206 (94–336)
Incidence (incl HIV)	50 (41–61)	119 (97–143)
Incidence (HIV-positive)	21 (1.7–2.6)	5.1 (4.1–6.2)
Case detection, all forms (%)	52 (43–63)	

Case notifications 2009

New cases	(%)	Retreatment cases	(%)
Smear-positive	10 541 (42)	Relapse	957 (48)
Smear-negative	7 349 (29)	Treatment after failure	180 (9)
Smear unknown	1 548 (6)	Treatment after default	752 (38)
Extrapulmonary	5 530 (22)	Other	104 (5)
Other	76 (<1)		
Total new	25 044	Total retreatment	1 993
Total < 15 years	3 136		

Total new and relapse	26 001	(96% of total)
Total cases notified	27 037	

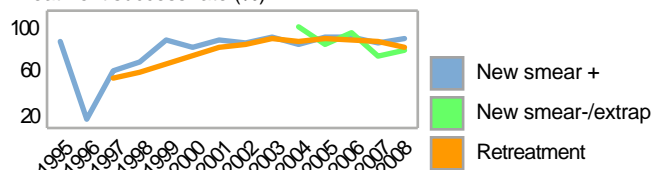
Drug regimens

Rifampicin used throughout treatment	Yes
% of patients treated with fixed-dose combinations (FDCs)	46
Paediatric formulations procured	Yes

Treatment success rate 2008 (%)

New smear-positive	81
New smear-negative/extrapulmonary	73
Retreatment	75

Treatment success rate (%)



MDR-TB, Estimates among notified cases * 2008

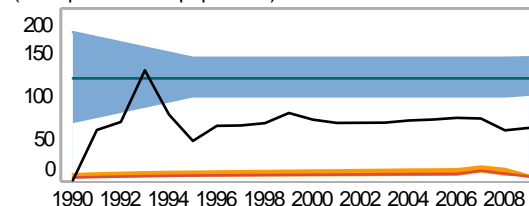
% of new TB cases with MDR-TB	0.90 (0.0–2.4)
% of retreatment TB cases with MDR-TB	14 (0.0–38)
Estimated MDR-TB cases among new pulmonary TB cases notified in 2009	180 (0–470)
Estimated MDR-TB cases among retreated pulmonary TB cases notified in 2009	290 (0–760)

MDR-TB reported cases 2009	New	Retreat-ment	Total
Cases tested for MDR-TB	125	207	332
% of notified tested for MDR-TB	<1	10	1
Confirmed cases of MDR-TB	35	59	94
MDR-TB patients started treatment			94

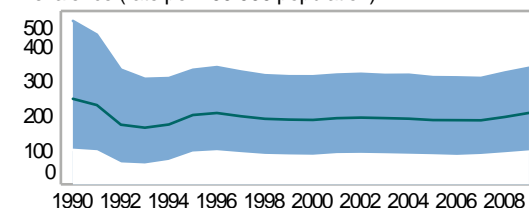
Laboratories	2008	2009	2010
Smear (per 100 000 population)	0.8	0.9	0.9
Culture (per 5 million population)	0.1	0.1	0.1
DST (per 10 million population)	0.2	0.2	0.2

Second-line DST available	No
National Reference Laboratory	Yes

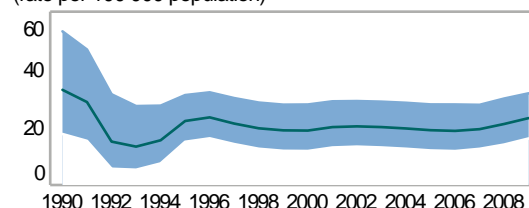
Incidence (HIV+TB in orange), notifications (black) (rates per 100 000 population)



Prevalence (rate per 100 000 population)



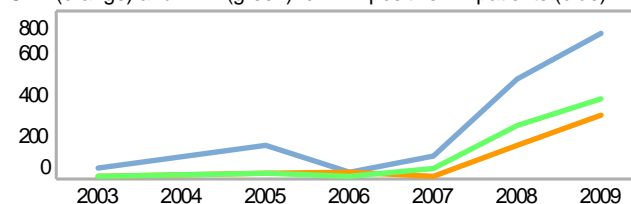
Mortality excluding HIV (rate per 100 000 population)



TB/HIV 2009

TB patients with known HIV status	16 168
% of TB patients with known HIV status	60
TB patients that are HIV-positive	692
% of tested TB patients that are HIV-positive	4
% HIV-positive TB patients started on CPT	43
% HIV-positive TB patients started on ART	54
HIV-positive people screened for TB	1 482
HIV-positive people provided with IPT	

CPT (orange) and ART (green) for HIV-positive TB patients (blue)



Financing	2010	2011
Total budget (US\$ millions)	3	2
Available funding (US\$ millions)	3	2
% of budget funded	100	100
% available funding from domestic sources	50	18
% available funding from Global Fund	49	81

NTP Budget (blue) and available funding (green) (US\$ millions)

