

High TB burden | High HIV burden |

Population 2009 (millions) 33

Estimates of burden * 2009	Number (thousands)	Rate (per 100 000 pop)
Mortality (excluding HIV)	94 (4.1–17)	29 (12–53)
Prevalence (incl HIV)	91 (39–170)	278 (120–526)
Incidence (incl HIV)	96 (78–120)	293 (238–352)
Incidence (HIV-positive)	54 (36–74)	164 (110–225)
Case detection, all forms (%)	44 (36–54)	

Case notifications 2009

New cases	(%)	Retreatment cases	(%)
Smear-positive	23 113 (57)	Relapse	1 382 (34)
Smear-negative	10 299 (26)	Treatment after failure	210 (5)
Smear unknown	2 016 (5)	Treatment after default	1 264 (31)
Extrapulmonary	4 893 (12)	Other	1 158 (29)
Other	0 (0)		
Total new	40 321	Total retreatment	4 014
Total < 15 years	622		

Total new and relapse	41 703	(94% of total)
Total cases notified	44 335	

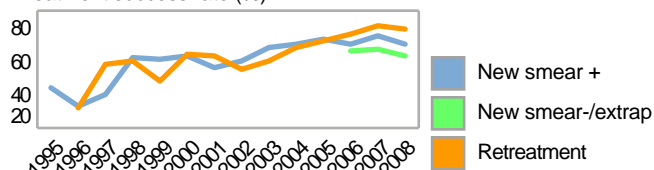
Drug regimens

Rifampicin used throughout treatment	Yes
% of patients treated with fixed-dose combinations (FDCs)	100
Paediatric formulations procured	Yes

Treatment success rate 2008 (%)

New smear-positive	70
New smear-negative/extrapulmonary	63
Retreatment	79

Treatment success rate (%)



MDR-TB, Estimates among notified cases * 2008

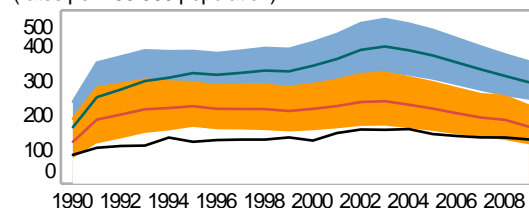
% of new TB cases with MDR-TB	0.50 (0.10–1.9)
% of retreatment TB cases with MDR-TB	4.4 (1.2–15)
Estimated MDR-TB cases among new pulmonary TB cases notified in 2009	180 (35–670)
Estimated MDR-TB cases among retreated pulmonary TB cases notified in 2009	180 (48–590)

MDR-TB reported cases 2009	New	Retreat-ment	Total
Cases tested for MDR-TB	369	228	770
% of notified tested for MDR-TB	<1	6	2
Confirmed cases of MDR-TB	6	41	57
MDR-TB patients started treatment			2

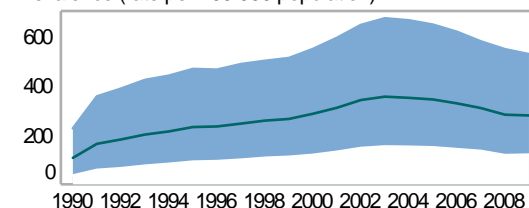
Laboratories	2008	2009	2010
Smear (per 100 000 population)	26	26	29
Culture (per 5 million population)	0.5	0.9	1.2
DST (per 10 million population)	0.6	1.2	1.2

Second-line DST available	In country
National Reference Laboratory	Yes

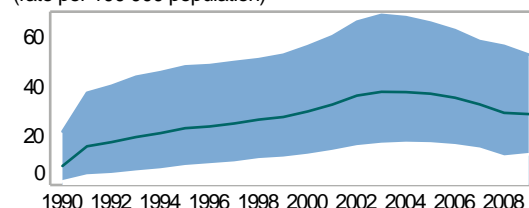
Incidence (HIV+TB in orange), notifications (black) (rates per 100 000 population)



Prevalence (rate per 100 000 population)



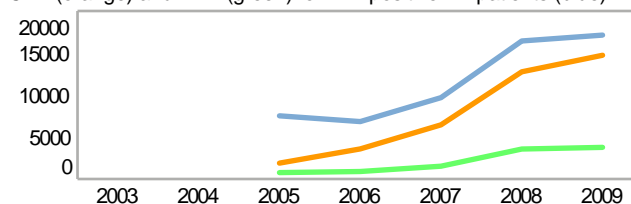
Mortality excluding HIV (rate per 100 000 population)



TB/HIV 2009

TB patients with known HIV status	31 695
% of TB patients with known HIV status	71
TB patients that are HIV-positive	17 131
% of tested TB patients that are HIV-positive	54
% HIV-positive TB patients started on CPT	86
% HIV-positive TB patients started on ART	22
HIV-positive people screened for TB	57 679
HIV-positive people provided with IPT	

CPT (orange) and ART (green) for HIV-positive TB patients (blue)



Financing	2010	2011
Total budget (US\$ millions)	20	23
Available funding (US\$ millions)	4	11
% of budget funded	20	48
% available funding from domestic sources	15	3
% available funding from Global Fund	60	76

NTP Budget (blue) and available funding (green) (US\$ millions)

