

High HIV burden |

Population 2009 (millions) 13

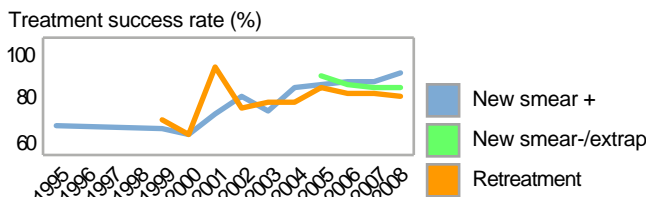
Estimates of burden * 2009	Number (thousands)	Rate (per 100 000 pop)
Mortality (excluding HIV)	1.9 (0.55–5.1)	15 (4.2–40)
Prevalence (incl HIV)	40 (14–73)	309 (108–562)
Incidence (incl HIV)	56 (46–68)	433 (352–522)
Incidence (HIV-positive)	38 (29–48)	295 (223–375)
Case detection, all forms (%)	80 (66–98)	

Case notifications 2009			
New cases	(%)	Retreatment cases	(%)
Smear-positive	12 995 (30)	Relapse	1 813 (73)
Smear-negative	20 825 (48)	Treatment after failure	155 (6)
Smear unknown	0 (0)	Treatment after default	517 (21)
Extrapulmonary	9 246 (21)	Other	0 (0)
Other	0 (0)		
Total new	43 066	Total retreatment	2 485
Total < 15 years	237		

Total new and relapse	44 879	(99% of total)
Total cases notified	45 551	

Drug regimens	
Rifampicin used throughout treatment	Yes
% of patients treated with fixed-dose combinations (FDCs)	
Paediatric formulations procured	Yes

Treatment success rate 2008 (%)	
New smear-positive	88
New smear-negative/extrapulmonary	83
Retreatment	80



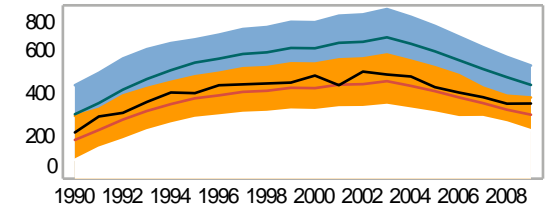
MDR-TB, Estimates among notified cases * 2008	
% of new TB cases with MDR-TB	1.8 (0.90–3.5)
% of retreatment TB cases with MDR-TB	23 (0.10–12)
Estimated MDR-TB cases among new pulmonary TB cases notified in 2009	610 (300–1 200)
Estimated MDR-TB cases among retreated pulmonary TB cases notified in 2009	57 (2.5–290)

MDR-TB reported cases 2009	New	Retreat-ment	Total
Cases tested for MDR-TB	63	30	93
% of notified tested for MDR-TB	<1	1	<1
Confirmed cases of MDR-TB	13	16	29
MDR-TB patients started treatment			0

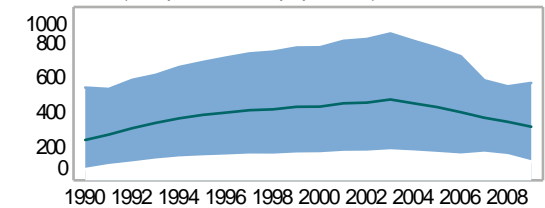
Laboratories	2008	2009	2010
Smear (per 100 000 population)	13	18	18
Culture (per 5 million population)	12	12	
DST (per 10 million population)	24	24	23

Second-line DST available	No
National Reference Laboratory	Yes

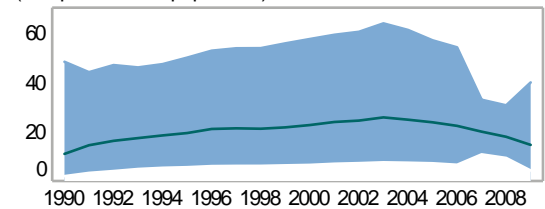
Incidence (HIV+TB in orange), notifications (black) (rates per 100 000 population)



Prevalence (rate per 100 000 population)

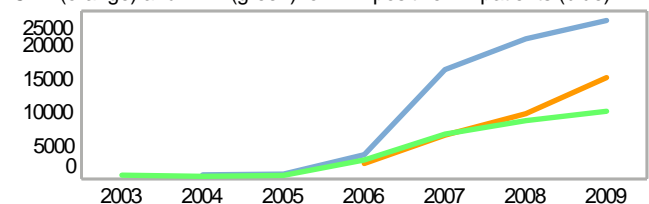


Mortality excluding HIV (rate per 100 000 population)



TB/HIV 2009	
TB patients with known HIV status	34 992
% of TB patients with known HIV status	77
TB patients that are HIV-positive	23 584
% of tested TB patients that are HIV-positive	67
% HIV-positive TB patients started on CPT	64
% HIV-positive TB patients started on ART	42
HIV-positive people screened for TB	
HIV-positive people provided with IPT	

CPT (orange) and ART (green) for HIV-positive TB patients (blue)



Financing	2010	2011
Total budget (US\$ millions)		7
Available funding (US\$ millions)		5
% of budget funded		71
% available funding from domestic sources		16
% available funding from Global Fund		30

NTP Budget (blue) and available funding (green) (US\$ millions)

